



MEDI-FLO[®]
ELASTOMERIC PUMP

Patient Guide

What to Expect, Preparation,
Treatment and Troubleshooting

Delivering Efficiency to Healthcare[®]

Distributed by: NDC Homecare, LLC
415 New Sanford Road / La Vergne, TN 37086
www.preferredmedical.com / 615.722.7865

Patient Information

Patient Name

Medication (name and dose)

Emergency contact phone numbers

Health care provider contact information

Start your medication infusions at these times

Length of infusion (approximate)

Pump tubing:

Primed
(filled with medication)

Not Primed
(not filled with medication)

Close tubing clamp to stop infusion and immediately contact your health care provider if you have any of the following side effects:

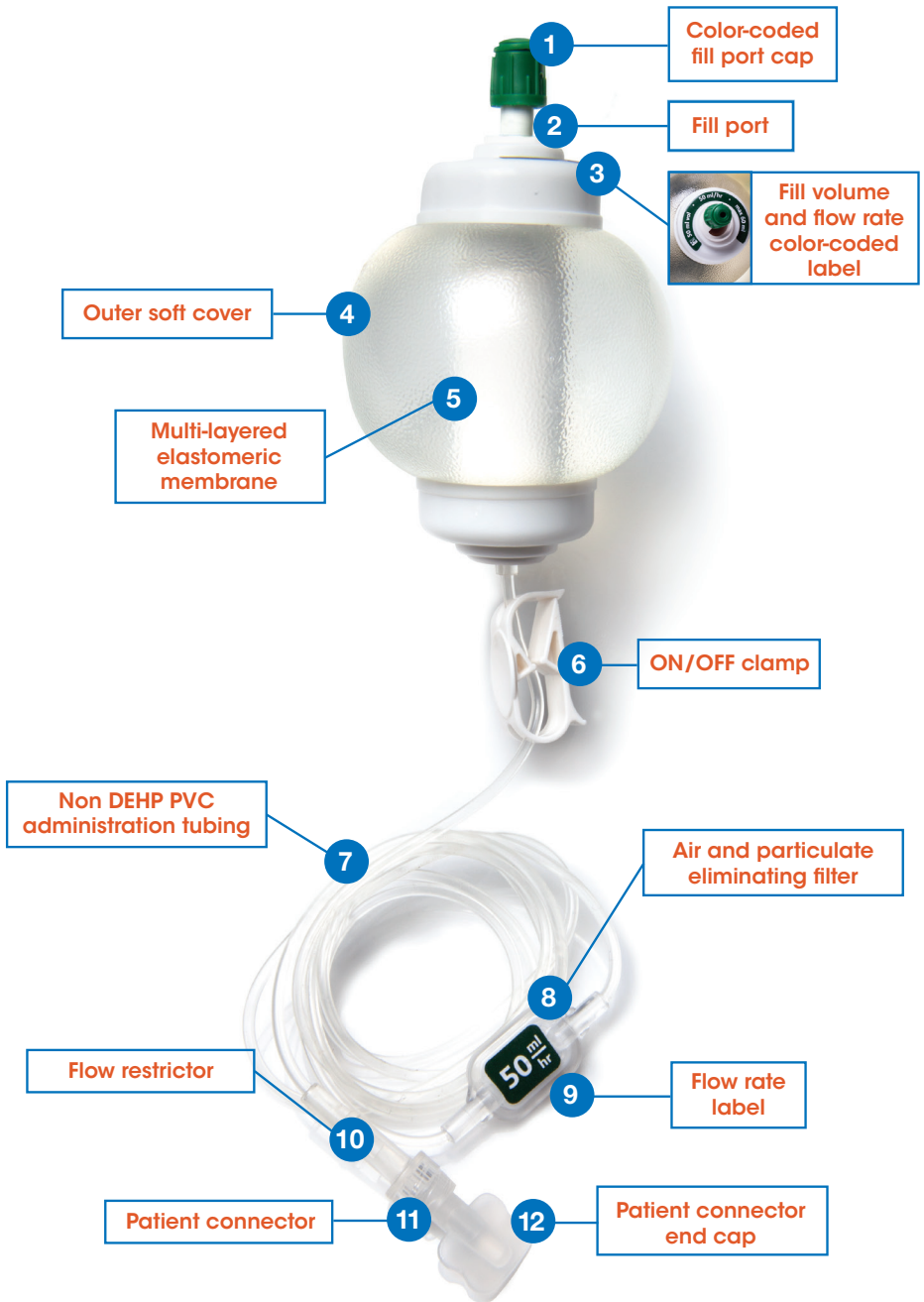
Store your pump in: Room temperature Refrigerator

Remove the MEDI-FLO® Elastomeric Pump from storage ____ hours before use.

CAUTION: Never put the pump in the microwave, direct sunlight or in water to warm your pump. Heating may cause problems with device and flow rate.

Catheter/access device instructions:

Product Diagram



What to Expect

The MEDI-FLO® disposable pump delivers medication using a specially designed multi-layered balloon-like reservoir through a catheter tube connected to your access site.

Connect the pump to your access site before opening the ON/OFF clamp. Ensure that the clamp remains ON/OPEN for the full infusion time. Talk to your pharmacist or physician for the expected infusion time.



FULL PUMP

The inside of the pump will be filled with medication and will be round and firm. The outer cover will be smooth and stretched over the ball.



DURING INFUSION

During the infusion the inside reservoir will shrink in size and the outer cover will begin to form wrinkles.



EMPTY PUMP

At the end of the infusion the inner ball will become a tall cylinder and the outer cover will collapse.

Precautions

1. Do not submerge the pump in water.
2. Prevent the filter from getting wet.
3. Make sure the tubing is free of kinks and the clamp is in the ON/OPEN position for full infusion time. If kinks are observed in the tubing, roll the tubing between your fingers to release the kink.
4. Do not get alcohol or detergents on the filter as this may cause a leak.
5. Do not sleep on the pump.
6. Do not squeeze or play with the filled pump. Applied pressure may result in rupture or breakage and will result in increased flow rate.
7. The section of tubing from the filter to the patient connector should be kept under clothing and in contact with the body.
8. Avoid prolonged periods of extreme heat or cold.
9. Prior to starting infusion, allow the pump to reach room temperature $\sim 73^{\circ}\text{F} \pm 2^{\circ}\text{F}$ ($\sim 23^{\circ}\text{C} \pm 2^{\circ}\text{C}$). If the solution is colder than room temperature, the infusion time will likely be longer than anticipated. Failure to allow solution to reach room temperature can lead to longer infusion time. The pump should be at or near room temperature.

Estimated times below:

Nominal Fill Volume	Refrigerated Temperature	Estimated Time to Reach Room Temp
50ml - 100ml	35.6° to 46.4° F (+2° to +8° C)	6 hours from refrigerator
50ml - 100ml	-0.4° F (-18° C)	12 hours from refrigerator
100ml+	35.6° to 46.4° F (+2° to +8° C)	12 hours from refrigerator
100ml+	-0.4° F (-18° C)	18 hours from refrigerator

10. Consult your pharmacist, nurse or physician for the expected infusion duration.

NOTE: Images above are MEDI-FLO® standard pumps and are used for visualization purposes only.

Preparation

Preparation

1 In a clean work area, assemble the following supplies:

- MEDI-FLO® pump
- Alcohol wipe(s)
- Flush syringe(s)



2 Before beginning your infusion ensure that:

- The MEDI-FLO® Pump is labeled with your name and that the medication name and dosage are correct.
- Review the expiration date and verify that it has not expired.
- The end cap and fill port cap are in place.

NOTE: If any of the above are not correct or missing, DO NOT use the pump. Contact your health care provider for further instructions.

3 Wash your hands thoroughly.

4 You may receive the MEDI-FLO® Pump with the tubing already primed (filled with medication) or you may need to prime the tubing. Refer to page 2 of this guide to see if your tubing is primed. If tubing is not primed, you will need to follow these steps:

- Remove the end cap on the pump tubing.
- Open the clamp and allow the tubing to fill with medication.
- When you see the drop at the end of the tubing close the clamp.



5 Check that the clamp on the tubing is in the OFF/CLOSED position.



Closed position, pump is not infusing.

Connecting the Device

1 Clean your access site as directed by your health care provider.

2 Remove the patient end cap from the luer tip end of the MEDI-FLO® tubing.

3 Insert the luer tip end of the tubing into your access site and turn the luer lock clockwise to secure the connection.

4 Verify the connection to your access site is secure.



Remove patient end cap.

Treatment

Starting Infusion

- 1 Once the patient connector is connected to your access site, you are ready to begin the infusion (make note of start time).
- 2 Tape flow restrictor to your skin to maintain the appropriate temperature for accurate medication delivery.
- 3 Begin infusion by opening the ON/OFF clamp.
- 4 Ensure the ON/OFF clamp remains in the ON/OPEN position and that the tubing remains free of kinks.
- 5 If kinks are observed in the tubing, roll between your fingers to release.
- 6 Do not squeeze the pump, the fluid will flow by itself.



Open position, infusion has started.

During Infusion

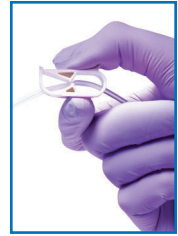
- 1 Depending on size of your pump, you may notice a change in the look and size of the pump fairly quickly. Please note it may take longer to see this change if the length of your infusion is more than 24 hours.
- 2 Do not squeeze or play with the filled pump. Applied pressure may result in rupture or breakage and will result in increased flow rate.
- 3 During use, place the pump in a carrying case, your pocket or on a table/bed next to you. Check with your health care provider regarding availability of carrying cases.
- 4 Ensure the section of tubing from the filter to the patient connector is kept underneath clothing and in contact with the body.
- 5 Depending on your therapy, you may be using your pump while sleeping. If so:
 - Make sure the pump is placed on a bedside table or on top of the bed covers.
 - Do not place the pump underneath the bed covers where the pump may become too warm.
 - Do not place the pump on the floor or hang the pump on a bed post.
- 6 Do not use while bathing, showering or swimming.



Treatment *(continued)*

Ending Infusion

- 1 Infusion is complete when the elastomeric membrane is no longer expanded.
- 2 Close the clamp and disconnect from your access site.
- 3 Flush your access site as directed by your healthcare provider.
- 4 Dispose of pump and supplies as instructed by your healthcare provider.



*Closed position
pump is not infusing.*

Troubleshooting

If pump does not seem to be working properly, please make sure:

- 1 The pump is at room temperature.
- 2 The ON/OFF clamp is in the open position and moves freely on the tubing.
- 3 All clamps on your catheter are open.
- 4 There are no kinks in the pump tubing.

Follow your healthcare provider's instructions to make sure that your catheter is working properly.

If you have checked all of the above and your pump still does not seem to be working, please contact your healthcare provider for further instructions.

Delivering Efficiency to Healthcare®

Distributed By:
NDC Homecare, LLC
415 New Sanford Road
La Vergne, TN 37086
1-800-722-7865

REV02

© 2022 Preferred Medical
www.wolf-pak.com